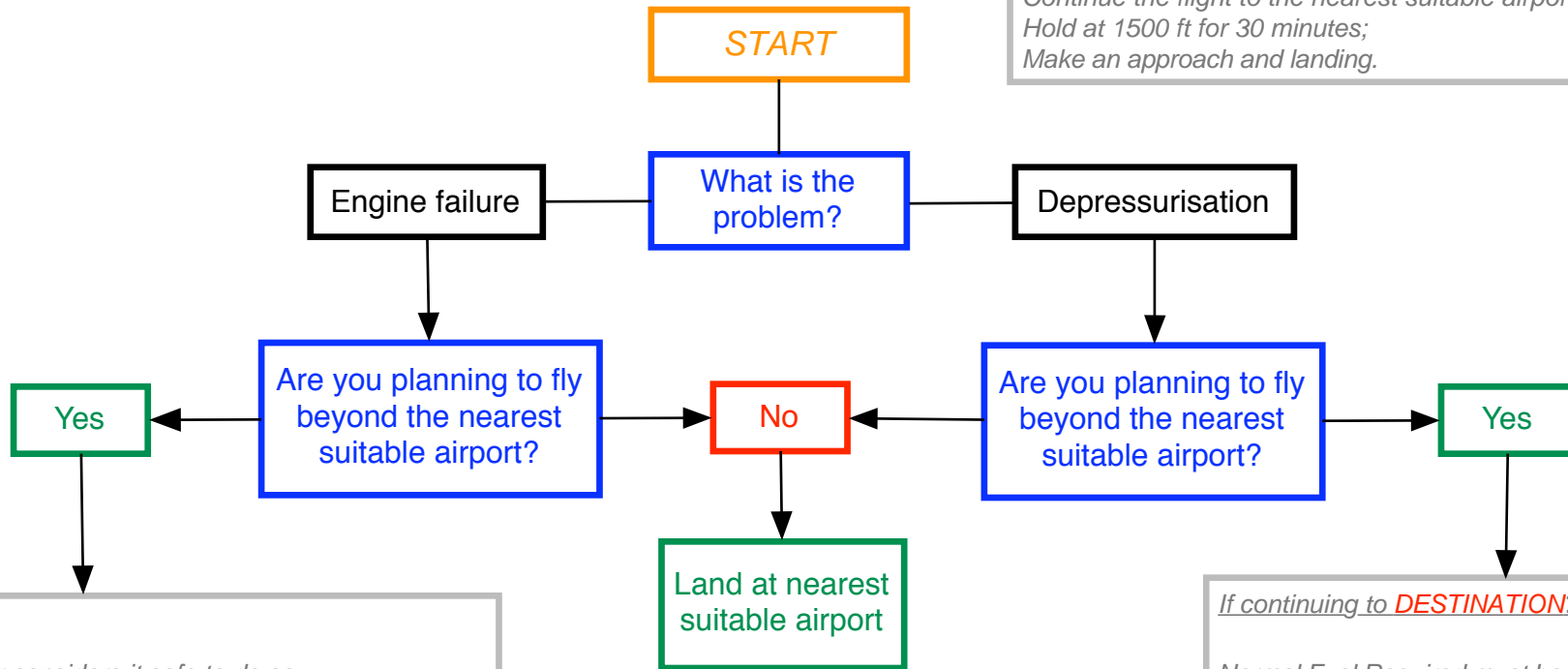


FUEL POLICY GUIDE

ENGINE INOPERATIVE AND DEPRESSURISATION

At any point on the planned route there must be sufficient fuel, in the event of the failure of an engine or depressurisation, to:

Continue the flight to the nearest suitable airport;
Hold at 1500 ft for 30 minutes;
Make an approach and landing.



Requirements:

The Commander considers it safe to do so;
With 2 engines inoperative:
Be able to clear obstacles within 10 nm of track by 2000 ft and;
Have sufficient fuel to fly to the nearest suitable airport plus 30 minutes reserve;
Fuel must be available to support depressurised flight to the nearest suitable airport;
If continuing to **DESTINATION**, Normal Fuel Required must be available unless the requirements of In-flight Reduction of Normal Fuel Required can be met.

If continuing to **DESTINATION**:

Normal Fuel Required must be available unless the requirements of In-flight Reduction of Normal Fuel Required can be met.