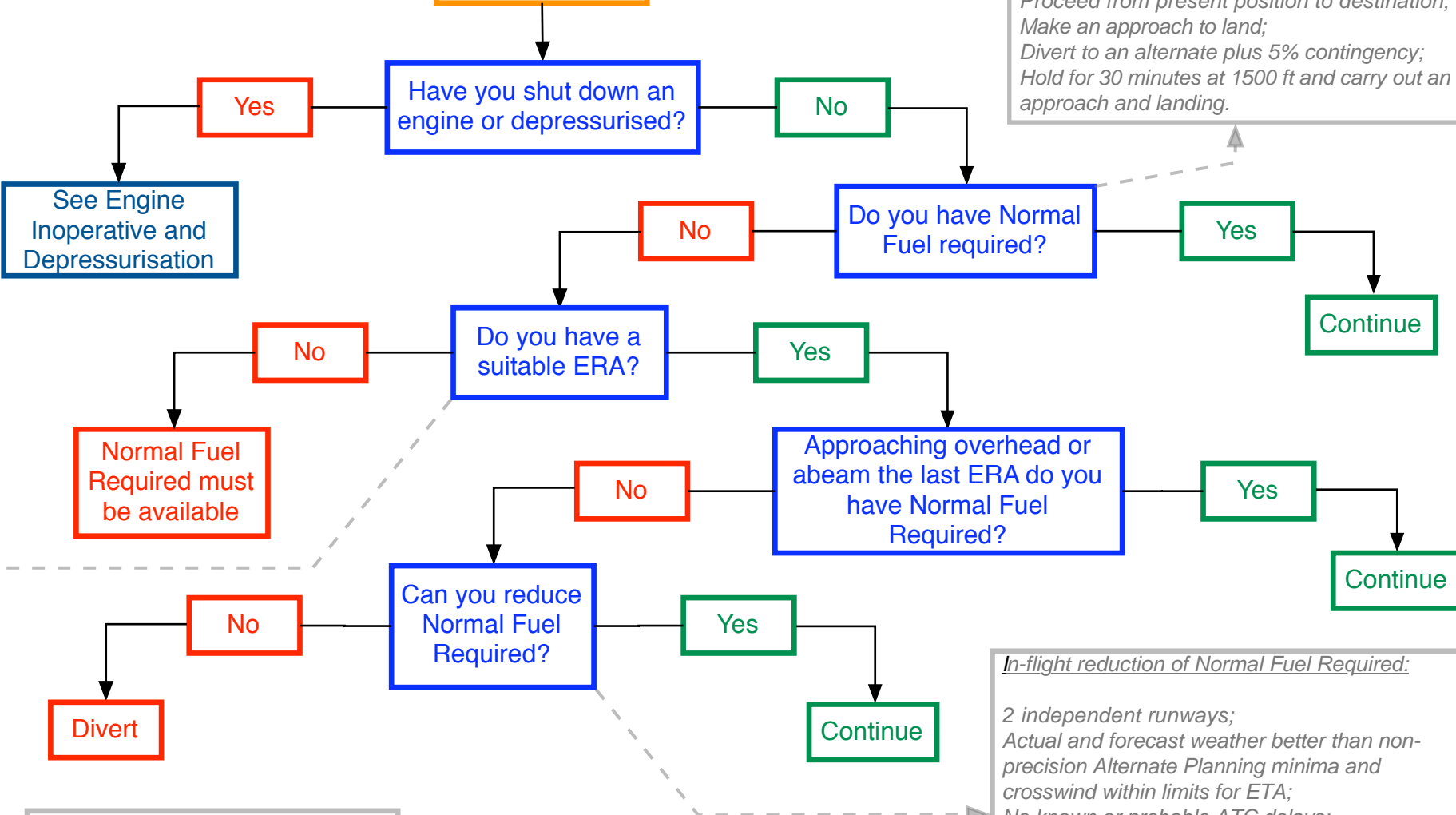


# FUEL POLICY GUIDE

START

*Normal Fuel Required:*  
Proceed from present position to destination;  
Make an approach to land;  
Divert to an alternate plus 5% contingency;  
Hold for 30 minutes at 1500 ft and carry out an approach and landing.



*Suitable ERA:*  
Weather at or above landing minima;  
Crosswind within limits.

*In-flight reduction of Normal Fuel Required:*  
2 independent runways;  
Actual and forecast weather better than non-precision Alternate Planning minima and crosswind within limits for ETA;  
No known or probable ATC delays;  
Fuel on board is sufficient to:  
- continue to destination plus 5% from overhead or abeam the last suitable ERA;  
- hold for 30 minutes at 1500 ft;  
- carry out an approach and landing.